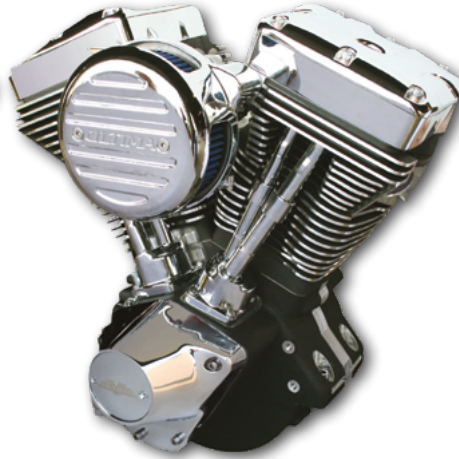
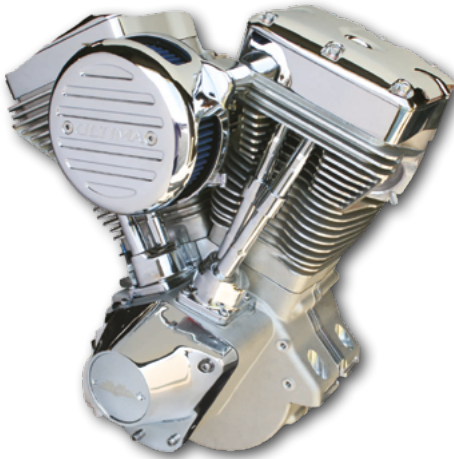




NEW PRODUCTS

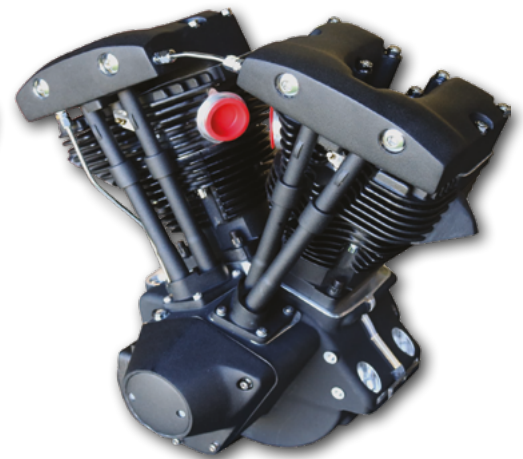
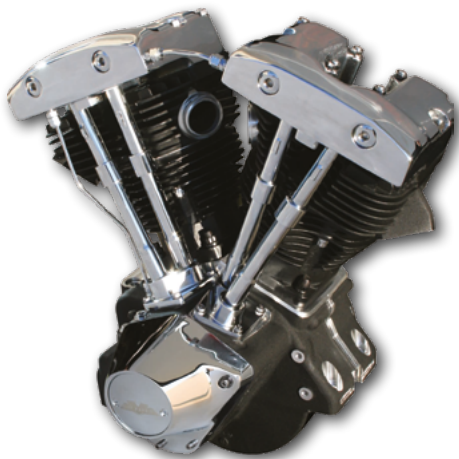
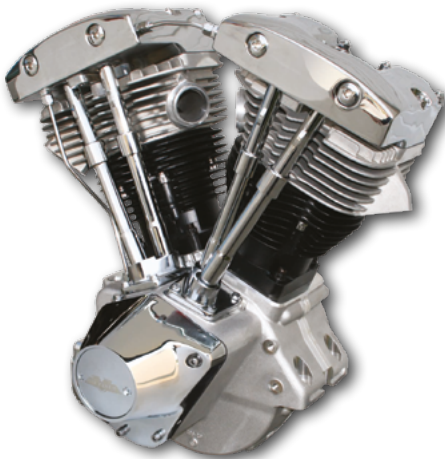


Competition Series Evolution 100" Natural Engine

Ultima® has made a change to the line of competition series 100" motors. If you are in the need of a new motor and you don't need a monster, we have what you are looking for. The 100" motors are a great replacement for a tired stock motor but still have great performance. Ultima went with a milder cam and lowered the compression. They start very easy making for less wear on your starter and battery. The milder cam makes for an extremely quiet motor.

- Forged dome piston
- Camshaft: 262 Duration .520" lift
- Single-fire ignition included
- Includes Ultima R1 Carburetor
- Billet oil pump
- Compression release valves
- Chrome covers (except all black version)

PART#	COLOR	FINISH	FITMENT	BORE	STROKE
918103	Aluminium	Raw, chrome	Fits 84-99 Evo Big Twin or Custom frames for Evo Big Twin Engines	3 7/8"	4 1/4"
918104	Black/chrome	Powder Coated, Wrinkled		3 7/8"	4 1/4"
918122	Black	Powder Coated, Wrinkled		3 7/8"	4 1/4"



Shovelhead 96" Traditional Engine

For those who are looking for a quality shovelhead engine at a realistic price, look no further! Ultimas engineers have developed what they believe to be a superior motor that will please even the most die-hard shovelhead enthusiast. This Ultima® shovelhead motor offers modern technology in a nostalgic exterior, including dual plug heads, compression releases & 3 bolt exhaust manifold.

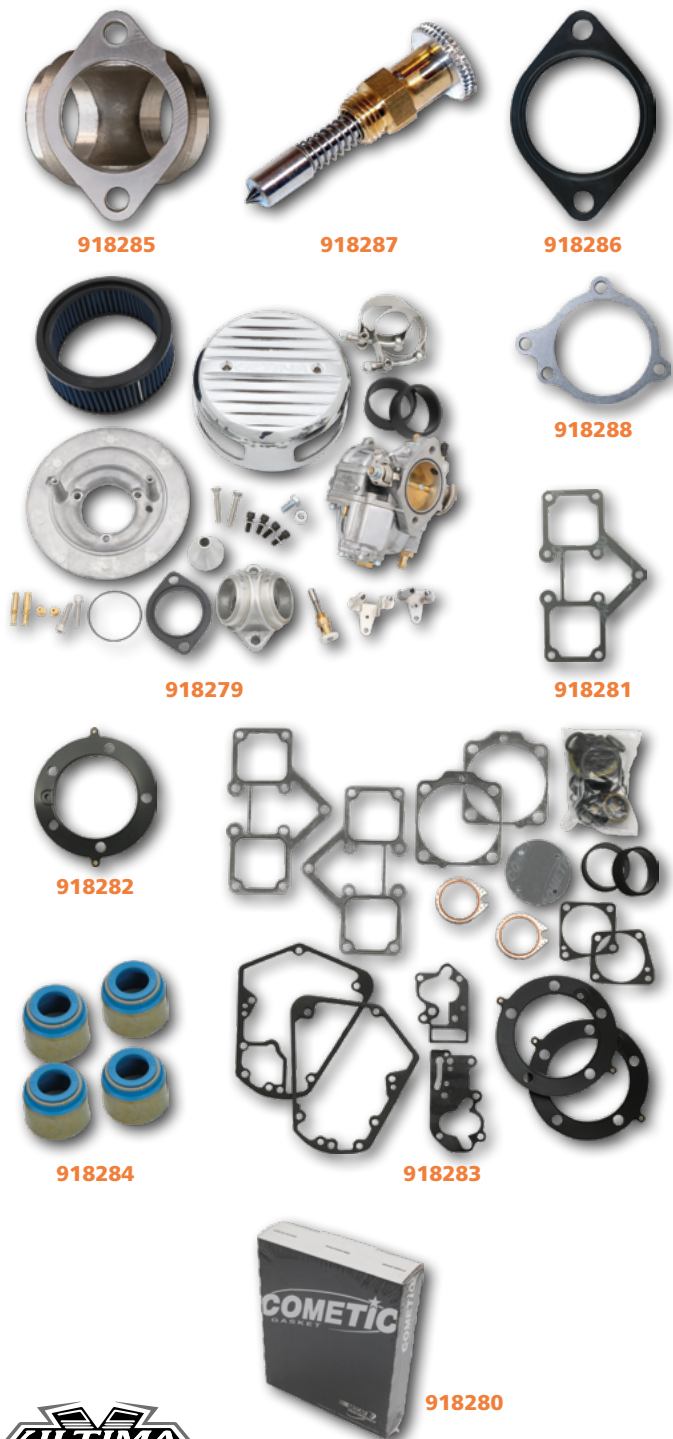
- 3-piece crank
- Dual plug heads
- Cast dome Pistons
- Billet Oil Pump
- 3 bolt exhaust manifold
- Intake manifold and carburetor not included
- Single fire ignition included
- Compression Release Valves
- Camshaft: 0.450" Lift / Duration 256

PART#	COLOR	FINISH	FITMENT	BORE	STROKE
918100	Aluminium	Raw	fits 70-99 style Chassis or retro Custom Bike builds	3 5/8"	4 5/8"
918101	Black/chrome	Powder Coated, Wrinkled		3 5/8"	4 5/8"
918102	Black	Powder Coated, Wrinkled		3 5/8"	4 5/8"



World's Finest Products For Harley-Davidsons

WWW.CUSTOM-CHROME-EUROPE.COM



Ultima Repl. Parts for Shovelhead 96 CUI traditional Engines

This chart contains engine replacement parts for Shovelhead 96 cui traditional engines (CCE# **918100**, **918101**, **918102**).

PART#	DESCRIPTION	UNIT
918279	Complete R2 carb kit. Band style	Kit
918285	Manifold	Each
918287	Carburetor Enrichener	Each
918286	Insulator Block	Each
918288	Carburetor Spacer	Each
918281	Engine Gaskets Rocker Box	Each
918282	Head Gasket	Each
918283	Base Gaskets	Each
918280	Engine Gasket Kit Complete	Kit
918284	Engine Valve Stem Steals	Each



Ultima Repl. Parts for 96 CUI Shovel and 100 CUI EVO Motors

This chart contains engine replacement parts for Shovelhead 96 cui, traditional engines and Competition Series Evolution 100 cui engines (CCE# **918100**, 918101, **918102**, **918103**, **918104**, **918122**).

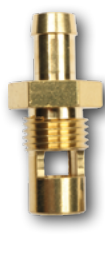
PART#	DESCRIPTION	UNIT
918245	Air filter insert	Each
918244	Carburetor gasket	Each
918253	Rear tappet guide gasket	Each
918254	Front tappet guide gasket	Each
918255	Gaskets cam cover	Each
918257	Oil pump base gasket	Each
918258	Oil pump cover gasket	Each
918259	Oil pump shaft seal	Each
918260	Crankshaft main seal	Each
918250	Pushrod tube middle O-Ring	Each
918251	Pushrod tube bottom O-Ring	Each
918252	Pushrod tube upper O-Ring	Each



Exhaust 3-Bolt Custom Flange

These Ultima 3-bolt exhaust flanges are ideal when building your own custom exhaust for Ultima Shovelheads, or S.T.D. & other custom Shovelhead & Panhead motors. Will work with single bolt style exhaust gaskets.

PART#	FIELD OF APPLICATION	UNIT
918539	For Ultima 96" Shovelhead	Each



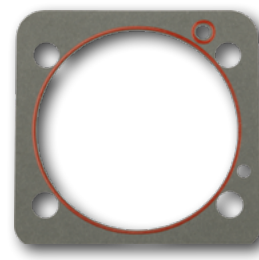
918263



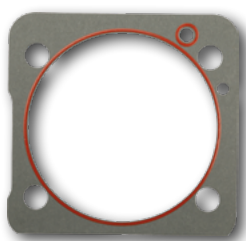
918243



918266



918240



918247



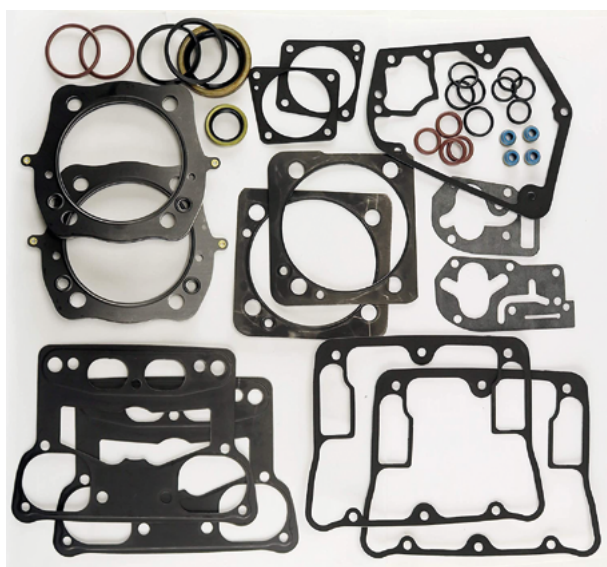
918248



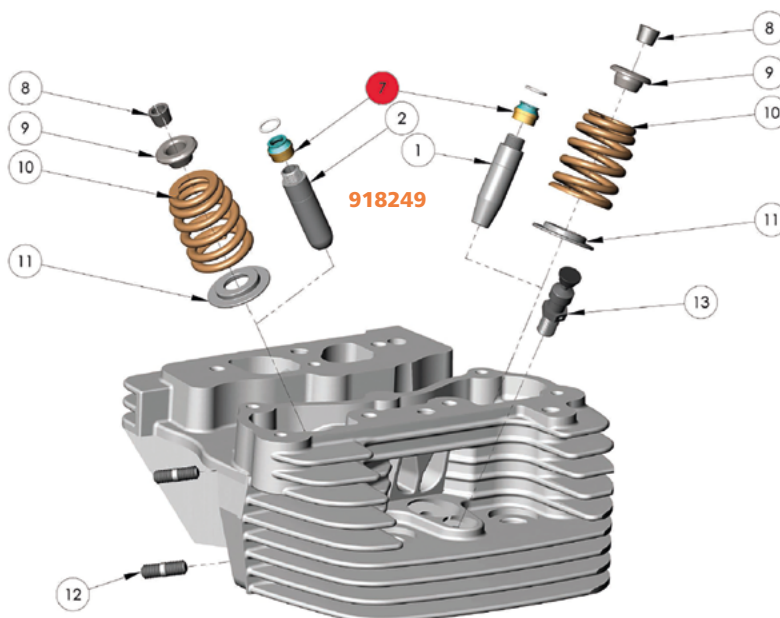
918242



918265



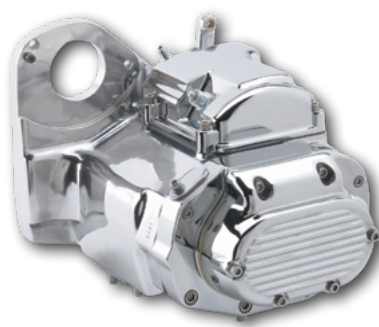
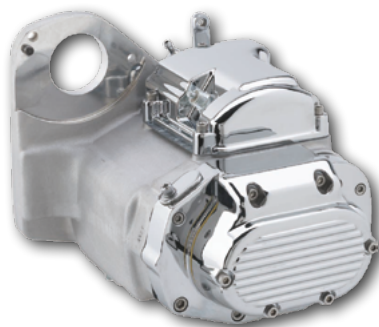
918239



Ultima Repl. Parts for Competition Series Evolution 100CUI Engines

This chart contains engine replacement parts for Competition Series Evolution 100 cui engines (CCE# 918103, 918104, 918122).

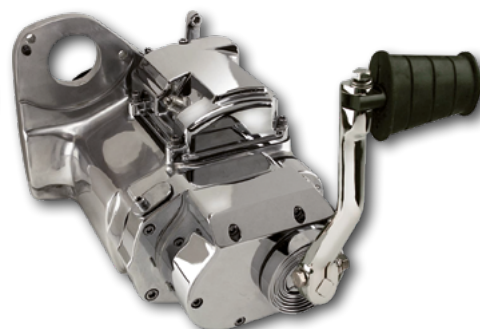
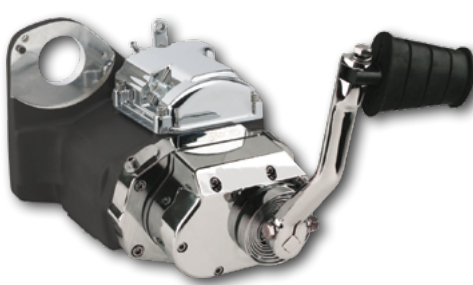
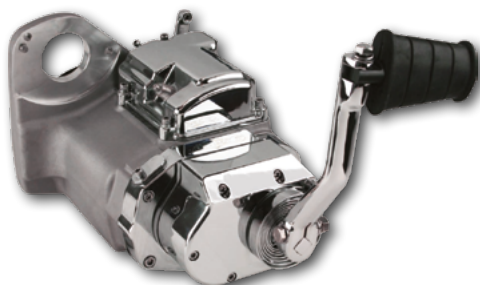
PART#	GASKET TYPE	FITMENT	UNIT
918263	Needle & Seat assembly	Ultima R1/R2 and S&S Super E/G carburetors	Each
918243	Insulator Block	Ultima R1/R2 and S&S Super E/G carburetors	Each
918239	Engine Gasket Kit Complete	Ultima 100" EVO	Kit
918240	Engine Gasket Kit Top End	Ultima 100, 107, 113" EVO	Kit
918247	Engine Gaskets Cylinder, front	Ultima 100, 107, 113" EVO	Each
918248	Engine Gaskets Cylinder, rear	Ultima 100, 107, 113" EVO	Each
918246	Engine Gaskets Cylinder, front or rear	Ultima 100, 107, 113" EVO	Each
918261	Carburetor Main Body rebuild kit	Ultima R1/R2 Carburetors (does not fit S&S carbs)	Kit
918262	Carburetor and Intake Gaskets	Ultima R1/R2 Carburetors (does not fit S&S carbs)	Each
918241	Engine Gaskets Rocker Box	Ultima 100" EVO with center hole	Each
918264	Carburetor float bowl gasket	Ultima R1/R2 Carburetors (does not fit S&S carbs)	Each
918242	Intake manifold to heads seal	Ultima 100" EVO	Each
918265	Carburetor and Intake Gaskets	Ultima 100" EVO	Each
918249	Engine Valve Stem Steals	Ultima 100" EVO	Each
918266	45 mm Manifold	Ultima 100" EVO	Each



6-Speed Transmission

- Gears and shafts made from hardened 8620 steel giving you years of service with big inch engines
- Chrome top and side covers
- Pro-cut lead-in ramps for positive shifting
- Hardened steel shift forks for durability and longevity
- Roller detent gives you smooth, positive shifting action
- Billet trap door
- Reinforced transmission case machined from permanent mold A356-T6 aluminum
- Close ratio 2.94 low gear set
- Assembled by professionals and bench tested
- Blind stud holes (no leaks)
- Improved spring material composition
- Cable operated clutch release
- Designed to use OEM style speedometer sensors
- 32 tooth pulley included

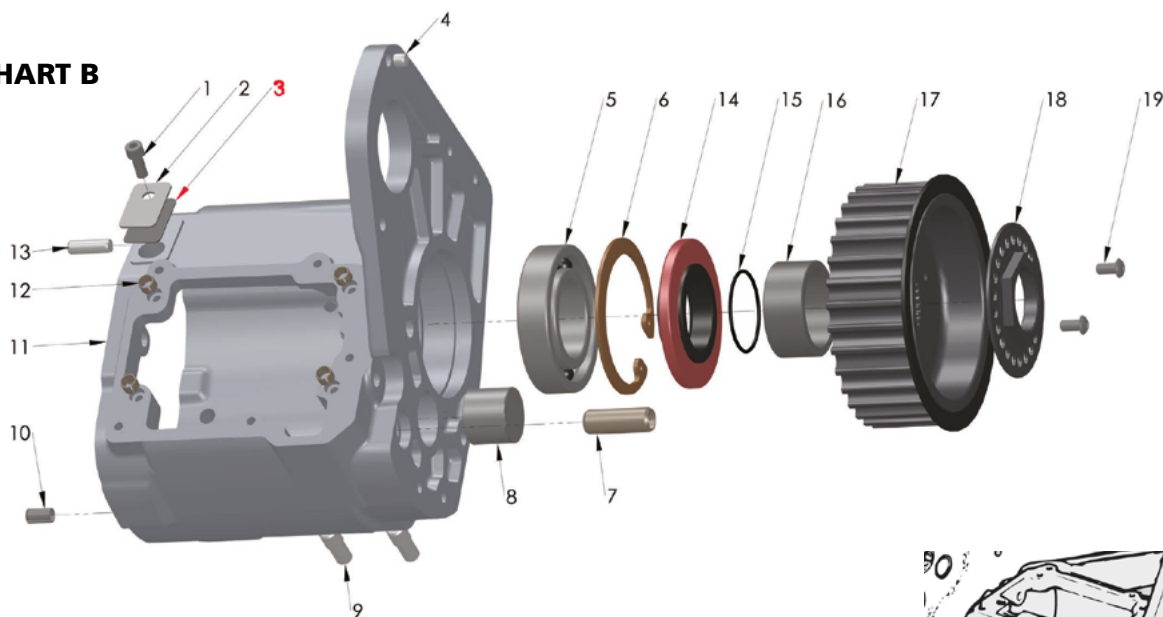
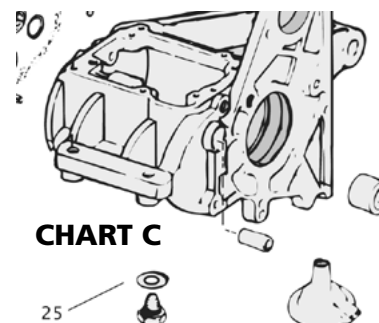
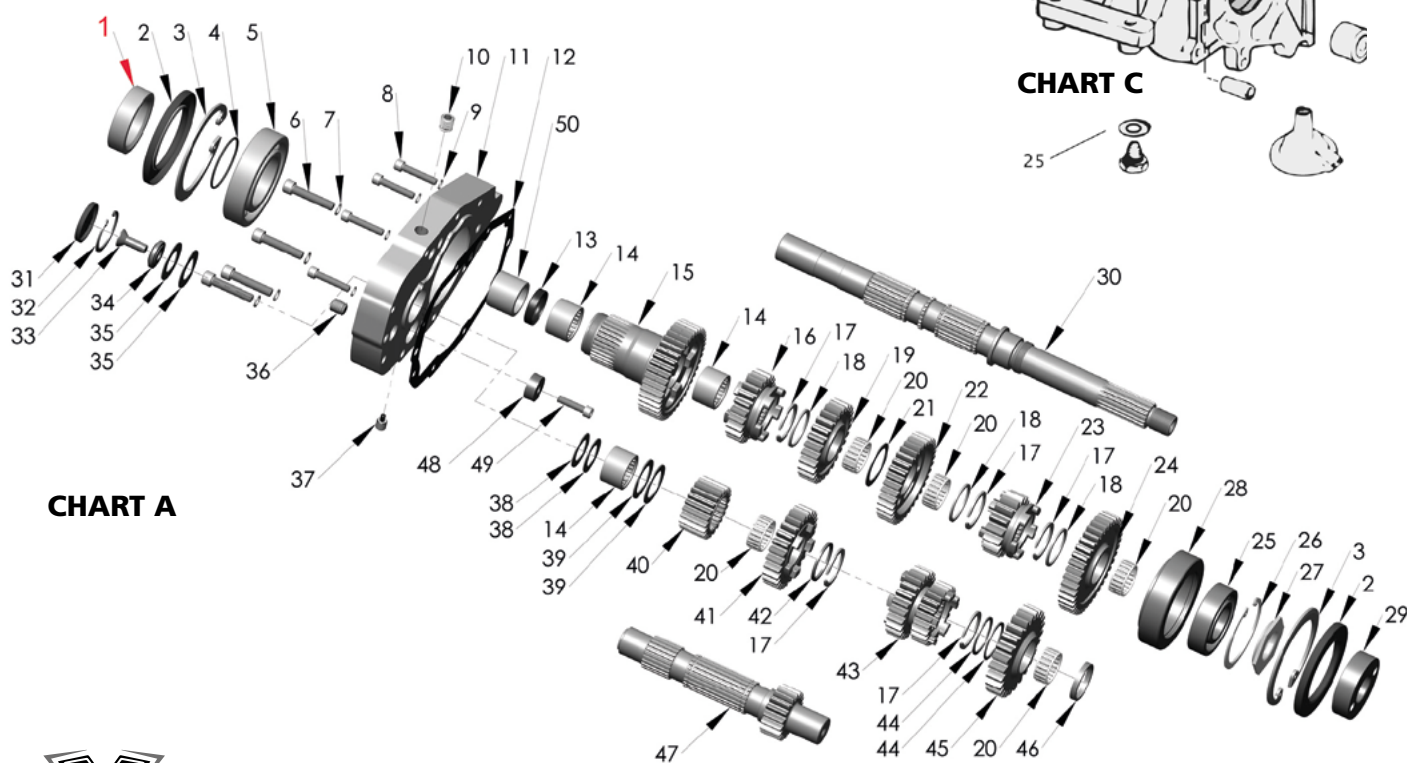
PART#	COLOR	FINISH	FIELD OF APPLICATION
918105	Aluminium	Raw	Fits Softail® models 91-99 and custom applications
918106	Black	Powder Coated	Fits Softail® models 91-99 and custom applications
918107	Aluminium	Polished	Fits Softail® models 91-99 and custom applications



6-Speed Kicker Transmission

- With kicker
- Gears and shafts made from hardened 8620 steel giving you years of service with big inch engines
- Chrome top and side covers
- Pro-cut lead-in ramps for positive shifting
- Hardened steel shift forks for durability and longevity
- Roller detent gives you smooth, positive shifting action
- Billet trap door
- Reinforced transmission case machined from permanent mold A356-T6 aluminum
- Close ratio 2.94 low gear set
- Assembled by professionals and bench tested
- Blind stud holes (no leaks)
- Improved spring material composition
- Cable operated clutch release
- Designed to use OEM style speedometer sensors
- 32 tooth pulley included

PART#	COLOR	FINISH	FIELD OF APPLICATION
918108	Aluminium	Raw	Fits Softail® models 91-99 and custom applications
918109	Black	Powder Coated	Fits Softail® models 91-99 and custom applications
918110	Aluminium	Polished	Fits Softail® models 91-99 and custom applications

CHART B

CHART C

CHART A


Ultima Repl. Parts for 6-Speed and 6-Speed Kicker Transmissions

This chart contains transmission replacement parts for 6-speed and 6-speed kicker transmissions (CCE# **918105**, **918106**, **918107**, **918108**, **918109**, **918110**).

PART#	FIELD OF APPLICATION	OEM #	CHART#
918238	Ultima® 6 Speed Transmission Gasket/Seal Rebuild Kit		
918227	Trapdoor gasket	35652-79	A 12
918228	Speedo hole cover plate gasket		B 3
918237	Transmission spacer	33344-94	A 1
918235	Ultima 5 & 6-speed Transmission Mainshaft Seal	12067A	A 2
918236	Quad Seal O-Ring	11165	B 15
918234	Neutral Switch washer	33043-80	C 25



6-Speed Builders Kit

The Ultima Six Speed Builders kit was designed to provide a simple, low cost, 6 speed overdrive solution for 1990/L Big twin owners. These kits work in most 1990-1999 models with little or no modification. A speedometer recalibration unit is required on some 1996-2000 and all 2001 later models. These kits will work in 5 spd type 2000/Later models with additional minor modifications. The trap door is thicker than stock so any brackets used that are trap door mounted may need modification. Complete instructions included. Ultima 6 Speed Gear sets can use the same #624107 speedometer recalibrator unit as our transmissions.

- Roller Detent for smoother shifting
- Precision Ground 8620 Gears and shafts
- Chrome Plated Billet Trap Door
- Gear Ratios are:
 - 1. 2.94: 1
 - 2. 2.21: 1
 - 3. 1.57: 1
 - 4. 1.23: 1
 - 5. 1: 1
 - 6. 0.86: 1

PART#	FITMENT
919401	91-99 Softail



Sportster Rockerbox Set

Chrome OEM style individual rocker box sets. Including gaskets and hardware. Must order two sets per engine..

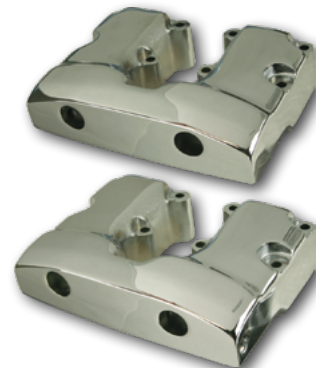
PART#	COLOR	FITMENT	DESCRIPTION
919851	Chrome	91-03 Sportster	Sold each (2 per engine needed)
919850	Chrome	04-06 Sportster	
919849	Chrome	07-20 Sportster, except 08-10 XR1200, 10-13 XR1200X	



74IN - 80IN Stock Bore Complete Cylinder Head

- C356-T6 Casting
- 1.940 stainless Int. Valves, 1.750 stainless Ex. Valves
- Manganese Bronze guides
- High silicon Wire Valve spring with black oxide steel retainers
- Compression release valves
- 3-bolt exhaust manifold flange for added strength & durability
- Dual plug

PART#	COLOR	FITMENT	POSITION
919830	Black	71-84 FX Shovel, 66-84 FL Shovel	rear
919829	Black	71-84 FX Shovel, 66-84 FL Shovel	front



Shovelhead Rocker Box Set

With the use of included stud spacers, these covers can be used on both 1966 thru 1981 and 1982 & later models. Replaces OEM 17516-77B, 17517-77B, 17518-80, 17519-80, 17550-80 and 17552-80.

PART#	COLOR	FITMENT	OEM #
919852	Chrome	71-84 FX Shovel, 66-84 FL Shovel	17516-77B, 17517-77B, 17518-80, 17519-80, 17550-80, 17552-80



Big Twin Evolution Rocker Box Assembly

PART#	COLOR	FITMENT	DESCRIPTION
919854	Chrome	85-94 FX Model, 91-98 Dyna, 84-99 Softail, 86-98 Touring	Sold each! Must order two sets per engine.



Rocker Cover Bolt Kit

Bolt kit for Evolution® rocker boxes. grade 8 bolts. Includes hardware to bolt down front and rear covers. Plain metal.

PART#	FITMENT
919853	85-94 FX Model, 91-98 Dyna, 84-99 Softail, 86-98 Touring



Big Twin Piston Pin Clip

PART#	FITMENT	OEM #
919868	37-52 Flathead, 37-47 Knucklehead, 48-65 Panhead, 71-72 FX Shovel, 66-72 FL Shovel	22581-32
919869	78-84 FX Shovel, 78-84 FL Shovel	22588-78
919867	73-77 FX Shovel, 73-77 FL Shovel	22582-52



919860

919861



Speedrod Pushrod Set

Ultima adjustable pushrods allow you to install the pushrods without removing the rockerboxes. Starting point 3 full turns pass 0 lash. All Ultima brand pushrods are made from tapered 4140 Steel with adjusters and tips made from hardened 8620 steel.

- Pushrods only standard length

PART#	FITMENT
919860	71-84 FX Shovel, 66-84 FL Shovel
919861	99-17 Dyna, 00-17 Softail, 99-16 Touring, 09-16 Trike
919859	85-94 FX Model, 91-98 Dyna, 84-99 Softail, 86-98 Touring



919859



Intake Manifold

Ultima manifolds are directly interchangeable with S&S Super G and Super E Carburetor manifolds.

PART#	FITMENT	FITMENT NOTE
919892	85-94 FX Model, 91-06 Dyna, 84-06 Softail, 86-06 Touring	With VOES and vacuum port
919894	85-94 FX Model, 91-06 Dyna, 84-06 Softail, 86-06 Touring	With vacuum port
919893	86-03 Sportster	For Models equipped with S&S Super E or Ultima R2 Carburetor



919857



919856



919855



919858



Adjustable Pushrod Kits

These heavy duty American made adjustable pushrod kits contain everything you need for immediate installation. Includes adjustable Pushrods, Pushrod Covers, Washers and O-Ring's.

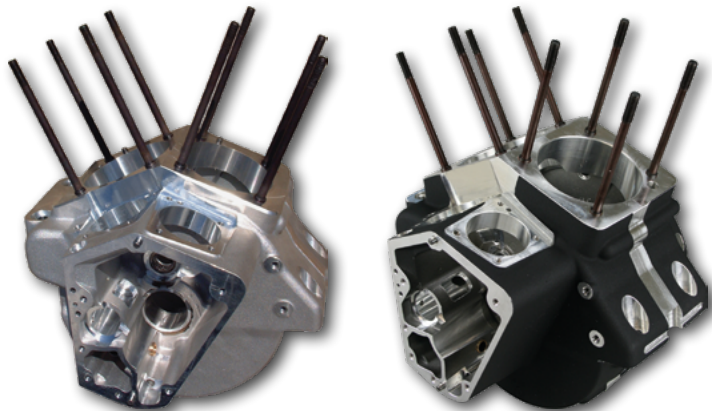
PART#	COLOR	FITMENT
919857	Chrome	85-94 FX Model, 91-98 Dyna, 84-99 Softail, 86-98 Touring
919856	Black	99-17 Dyna, 00-17 Softail, 99-16 Touring, 09-16 Trike
919855	Black	85-94 FX Model, 91-98 Dyna, 84-99 Softail, 86-98 Touring
919858	Chrome	99-17 Dyna, 00-17 Softail, 99-16 Touring, 09-16 Trike



Shovel Engine Case

Engine case styled after the models from 1970 to 1984. Cast-in steel inserts guaranteed not to move. Large bore breather for increased crank case vacuum and less blow by. Alignment dowels for true line bore. Counterbored stainless allen head case bolts. Close machining tolerances. Made from prime C356-T6 aluminum. styling and cosmetic machining for a custom look.

PART#	COLOR	FITMENT
919825	Natural	71-84 FX Shovel, 70-84 FL Shovel



Evolution Standard 92-99 Engine Case

These cases are produced from prime C356-T6. Machining is done on state of the art CNC machining centers using hydraulic fixturing for repeatability. This along with other solid quality features like counter bored allen case bolts, large 1/4" NPT drain plug, and a high volume ported breather make these a professional engine builders choice for high performance engines. All case kits come with the main bearings, cam bearing, chromoly cylinder studs installed and the pinion race sized to 1.751". Also included are the main seal, main seal spacer, top end feed screen and spring, chrome timing hole plug, stainless steel case bolts and the oil pressure gauge.

PART#	COLOR	FITMENT
919826	Natural	92-94 FX Model, 92-98 Dyna, 92-99 Softail, 92-98 Touring
919827	Black	92-94 FX Model, 92-98 Dyna, 92-99 Softail, 92-98 Touring



Crank Assembly

These dynamically balanced crankshafts use lightweight racing H-Beam connecting rods making them an exceptional value. This is the core of your engine and can make or break your ride quality. These crankshafts have a 8.250" dia. counterweight.

PART#	FITMENT
919828	00-06 Softail



83 and Up Big Twin Rod Assembly

Rod set includes new rods, 3 hole crank pin, cages, standard rod rollers, crank pin nuts and piston pin bushings honed for stock pins. Made in Japan. All parts meet or exceed OEM specifications.

PART#	FITMENT	FITMENT NOTE	OEM #
919883	83-84 FX Shovel, 83-84 FL Shovel, 85-94 FX Model, 91-98 Dyna, 84-99 Softail, 86-98 Touring	Except E83 Models	24281-83A



919886



919885



919884



Motor Sprocket Shaft Spacer

PART#	FITMENT	OEM #
919886	03-06 Softail	24039-03
919885	01-02 Softail	24039-01A
919884	00 Softail, 99-02 Dyna	24038-99



Big Twin Pinion Conversion Kit

To be used with taper style pinion shafts in non taper crankshaft applications. Fits 90-later Big Twin models.

PART#	FITMENT
919818	90-94 FX Model, 91-98 Dyna, 90-99 Softail, 90-98 Touring



Pinion Gear

PART#	FITMENT	OEM #	COLOR
919820	77-84 FX Shovel, 77-84 FL Shovel,	24042-78	yellow
919819	85-89 FX Model, 84-89 Softail,	24041-78	white
919822	86-89 Touring	24044-78	blue
919821		24043-78	red



Left Side Twin Cam Sprocket Shaft Bearing Kit

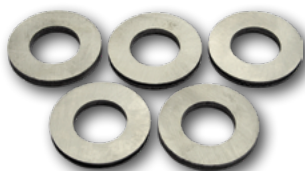
Kit includes 2 thrust washers (repl. OEM 8972), 1 bearing, (repl. OEM 24605-07), 1 retaining ring (repl. OEM 35114-02) & 1 bearing race (repl. OEM 24004-03).

PART#	FITMENT	OEM #
919813	99-17 Dyna, 00-17 Softail, 99-16 Touring, 09-16 Trike	24004-03B, 24605-07, 35114-02, 8972



Twin Cam Pinion Sprocket Bearing

PART#	FITMENT	OEM #
919814	99-17 Dyna, 00-17 Softail, 99-16 Touring, 09-16 Trike	24605-07



Camdrive Sprocket Spacer

PART#	FITMENT	OEM #	SIZE
919876		25736-06	.130
919873		25729-06	.100
919874	06-17 Dyna, 07-17 Softail, 07-16	25731-06	.110
919875	Touring, 09-16 Trike	25734-06	.120
919877		35737-06	.140
919878		25738-06	.150



Twin Cam Sprocket Shaft Race

PART#	FITMENT	OEM #
919815	99-17 Dyna, 00-17 Softail, 99-16 Touring, 09-16 Trike	24004-03



Inner Camshaft Needle Bearing

PART#	FITMENT	OEM #
919872	06-17 Dyna, 07-17 Softail, 07-16 Touring, 09-16 Trike	9215
919871	99-05 Dyna, 00-06 Softail, 99-06 Touring	9198



Twin Cam Sprocket Shaft Bearing Retaining Ring

PART#	FITMENT	OEM #
919816	99-17 Dyna, 00-17 Softail, 99-16 Touring, 09-16 Trike	35114-02



Twin Cam Crankcase Main Bearing Thrust Washer

PART#	FITMENT	OEM #
919817	99-17 Dyna, 00-17 Softail, 99-16 Touring, 09-16 Trike	8972



Twin Cam Sprocket Retention Kit

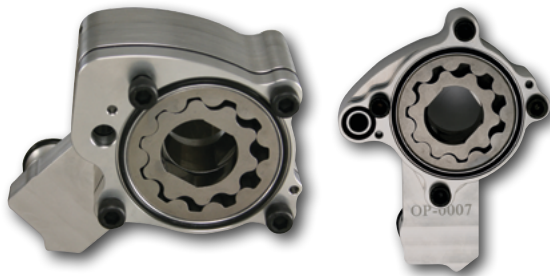
PART#	FITMENT	OEM #
919847	06-17 Dyna, 07-17 Softail, 07-16 Touring, 09-16 Trike	25566-06



Oil Pump

Forged chrome or polished oil pumps for Big Twin models. Comes complete with all necessary hardware and gaskets included.

PART#	FINISH	FITMENT	OEM #
919832	Polished	73-84 FX Shovel, 73-84 FL Shovel, 85-91 FX Model, 91 Dyna, 84-91 Softail, 86-91 Touring	26190-73
919831	Polished	36-52 Flathead, 36-47 Knucklehead, 48-65 Panhead, 66-72 FL Shovel, 71-72 FX Shovel	



High Flow Oil Pump

Billet oil pump for Twin Cam models. Made from billet aluminum, 40% increase in feed volume & 60% increase in scavenging volume. Comes complete with all necessary hardware and gaskets included.

PART#	FITMENT	OEM #
919841	06-17 Dyna, 07-17 Softail, 07-16 Touring, 09-16 Trike	26037-06
919840	99-05 Dyna, 00-06 Softail, 99-06 Touring	26035-99A



High Volume Sportster Oil Pump

PART#	FITMENT	OEM #
919842	91-20 Sportster	26204-91A



High Output Billet Oil Pump

Ultima® now has its own line of oil pumps including the Ultima® standard Volume (s.V.) Oil Pump, and the Ultima® High Output (H.O.) Oil Pump. Ultima®'s main focus on the development of the new oil pumps was consistency. Ultima® pumps are checked on a Coordinate Measuring Machine, and flow tested on a test stand to insure the oil pumps are consistent from one pump to the next, and the motor is getting adequate oil. Ultima®'s s.V. pump performs with similar characteristics of the stock pump for volume and pressure. The H.O. pump has a much greater potential for pressures and volume. Unlike stock oil pumps which won't start feeding the bottom end oil until 2000+ RPM, tests show the H.O. Pump will feed the bottom end at idle speeds, and keep a consistent flow throughout the R.P.M range to keep from floating bottom end bearings. Bottom line, you are getting a precise pump that you can be confident in. Check fitting for Baggers due to master cylinder.

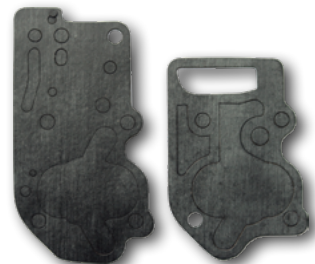
- High Output (H.O.) Oil Pump
- Flow tested on a test stand to insure the oil pumps are consistent
- Performs with similar characteristics of the stock pump for volume and pressure
- The H.O. pump has a much greater potential for pressure and volume
- Start feeding the bottom end at idle speeds, and keep a consistent flow throughout the RPM range

PART#	COLOR	FITMENT	OEM #
919838	Polished	85-91 FX Model, 91 Dyna, 84-91 Softail, 86-91 Touring	26190-73
919839	Black wrinkle	85-91 FX Model, 91 Dyna, 84-91 Softail, 86-91 Touring	26190-73
919837	Black wrinkle	92-94 FX Model, 92-98 Dyna, 92-99 Softail, 92-98 Touring	26050-92, 26097-98, 26088-98
919836	Polished	92-94 FX Model, 92-98 Dyna, 92-99 Softail, 92-98 Touring	26050-92, 26097-98, 26088-98



Gasket Kit For 36-91 Oil Pumps

PART#	FITMENT
919833	36-52 Flathead, 36-47 Knucklehead, 48-65 Panhead, 71-84 FX Shovel, 66-84 FL Shovel, 85-91 FX Model, 91 Dyna, 84-91 Softail, 86-91 Touring



Breather Gear

1215 steel material holds up better than the stock plastic gears, and are less likely to damage the case. Improves breathing capacity. Outperforms the stock plastic unit and is a must for any performance engine.



PART#	FITMENT	FITMENT NOTE	OEM #	Size
919882	77-84 FX Shovel, 77-84 FL Shovel, 85-94 FX Model, 91-98 Dyna, 84-99 Softail, 86-98 Touring	Except E77 Models	25313-77A	+ .030
919881	77-84 FX Shovel, 77-84 FL Shovel, 85-94 FX Model, 91-98 Dyna, 84-99 Softail, 86-98 Touring	Except E77 Models	25313-77A	STD



Late 79-82 Breather Valve Washer Assortment

PART#	FITMENT	DESCRIPTION	OEM #
919879	50-65 Panhead, 71-79 FX Shovel, 66-79 FL Shovel	.110,.115,.120,.125	25316-52, 25313-50, 25314-50, 25315-50
919880	79-82 FX Shovel, 79-82 FL Shovel (Except E79 Models)	.110 thru .140	25320-79, 25321-79, 25322-79, 25323-79, 25325-79, 25326-79, 25327-79



Hydraulic Lifter

PART#	FITMENT	OEM #
919862	86-90 Sportster, 85-94 FX Model, 91-98 Dyna, 84-99 Softail, 86-98 Touring, 87-90 Buell	18523-86
919863	91-99 Sportster	18526-89A, 18521-92A



Stock Replacement Lifter

PART#	FITMENT	OEM #
919864	00-20 Sportster, 99-17 Dyna, 00-21 Softail, 99-21 Touring, 09-21 Trike	18538-99



Evolution Tappet Blocks

These tappet blocks (front & rear) for Evolution Big Twin 1984 & later are sold with eight chrome plated allen bolts. Replaces OEM 18542-83A and 18540-83A.

PART#	COLOR	FITMENT	OEM #
919865	Black	85-94 FX Model, 91-98 Dyna, 84-99 Softail, 86-98 Touring	18542-83A, 18540-83A



Twin Cam Lifter Cover

- Billet aluminum
- Precision CNC made
- Eycatching detail

PART#	FITMENT	OEM #
919866	99-17 Dyna, 00-17 Softail, 99-16 Touring, 09-16 Trike	17964-99, 17966-99



Cam Cover for Twin Cams

PART#	COLOR	FITMENT
919870	Black	01-17 Dyna, 01-17 Softail, 01-16 Touring, 09-16 Trike



R2 Carburetor

Ultima's performance carburetors are directly interchangeable with S&S Super G and Super E Carburetors. Ultima carburetors will accept S&S jets and S&S bolt pattern air filter assemblies & manifolds.

- Relocated accelerator pump nozzle for increased throttle response
- THUNDER JETS are a bolt on
- Simply remove the plugs and screw in the Thunder Jet
- No expensive machining required
- Installation & tuning instructions available online at www.ultimaproducts.com

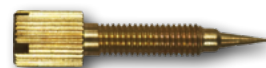
PART#	FIELD OF APPLICATION	UNIT
919891	S&S Super G Replacement	Each
919890	S&S Super E Replacement	Each



919895



919896



919897



919898



Repl. Parts for Ultima R1/R2 Carburetors

PART#	FIELD OF APPLICATION	UNIT
919895	Float Bowl	Each
919896	Float	Each
919897	Idle Mixture Screw	Each
919898	Idle Mixture Spring	Each



919900

919899

Throttle Cable Guide for Stock Cable

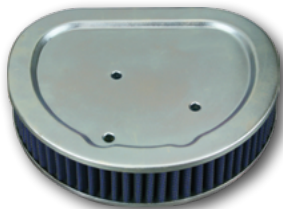
PART#	FITMENT	FITMENT NOTE
919900	90-94 FX Model, 91-98 Dyna, 90-99 Softail, 90-98 Touring	Only Carbureted Models
919899	81-84 FX Shovel, 81-84 FL Shovel, 85-89 FX Model, 84-89 Softail, 86-89 Touring	Only Models with Butterfly Carburetor



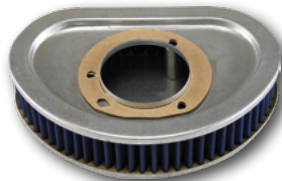
Black PVC Coated Stainless Braided Fuel Line

As an upgrade over stock kit. Flex lines are clear or black PVC coated stain- less steel braided with chrome steel hard line and fittings. All components are resistant to chemicals found in gasoline.

PART#	FITMENT	OEM #	UNIT
919889	07-20 Sportster	27693-07	Each
919888	08-16 Touring	61208-10	Each
919887	01-17 Softail, 02-06 Touring	62900-01D, 62349-04F	Each



919907



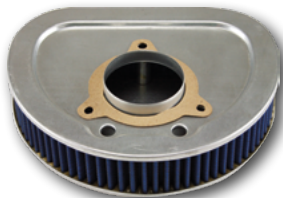
919908



919906



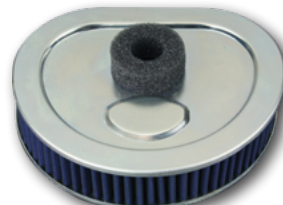
919904



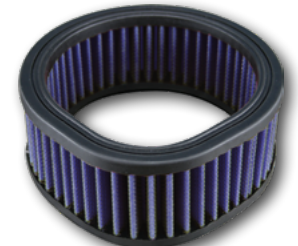
919909



919903



919902



919905



Air Filters

- Hand poured to eliminate wicking
- Zinc coated components to prevent rusting
- Urethane seals better to mating surfaces because it is more flexible
- 100% washable and reusable
- High-Flo four layer construction of surgical cotton
- Epoxy coated wire mesh
- Sold each



919901

PART#	FITMENT	FITMENT NOTE	OEM #
919907	99-07 Dyna, 00-15 Softail, 99-07 Touring	Except 99-01 EFI Touring Models and CVO Models and Models with round Air Cleaner	29461-99
919908	08-17 Dyna, except 16-17 FXDLS	Dyna models equipped with Tear Drop Air Cleaner	29191-08
919906	07-20 Sportster, except 08-10 XR1200, 10-13 XR1200X, 99-17 Dyna, except 16-17 FXDLS, 00-15 Softail, except 11 FLSTSE2, 12 FLSTSE3, 13-14 FXSBSE, 14-15 FLSTNSE, 99-07 Touring, except 99-01 FLHRCI, 99-01 FLHTCUI, 99-01 FLTRI, 00-01 FLHRI	For Models with SE Round Air Cleaner Kit	29442-99,A,B,C,D
919904	88-03 Sportster		29036-88B, 29331-96
919909	08-13 Touring, 09-13 Trike	Except CVO Models with SE Air Cleaner Kits	29633-08
919903	04-13 Sportster, except 08-10 XR1200, 10-13 XR1200X		29331-04
919902	88-94 FX Model, 91-98 Dyna, 88-99 Softail, 86-98 Touring		29259-89, 29259-91A, 29330-96, 29259-93
919905			
919901	16-17 Softail, 08-16 Touring, 09-16 Trike		29244-08



World's Finest Products For Harley-Davidsons

Custom Chrome Europe GmbH

Carl-von-Ossietzky-Straße 8 | 55459 Grolsheim/Germany

Phone: +49 (0) 6721 - 4 007 - 0 | Fax: +49 (0) 6721 - 4 007 - 100

e-mail: info@customchrome.de | www.custom-chrome-europe.com

Managing Director: Thomas Noetzel · Mainz Local Court · Commercial Registry No. 45562 · VAT No. DE811309246