

RIDE UNRIVALLED

EST. SINCE 1970



NEW
UPGRADE

KURYAKYN

Dillinger Skid Plate

Take your Sporty to the limit with the Dillinger Skid Plate. Durable steel construction protects the lower front frame and engine from rocks and debris so you can put it through the ultimate thrash test.

- Bolts directly to the frame for easy installation
- Vented openings allow proper engine cooling
- Available in satin black or silver
- Measures 13.25" long x 7.25" wide

PART#	FITMENT	COLOR
776683	04-20 Sportster	Silver
776684	04-20 Sportster	Black



NEW
UPGRADE



KURYAKYN

Dillinger Luggage Rack

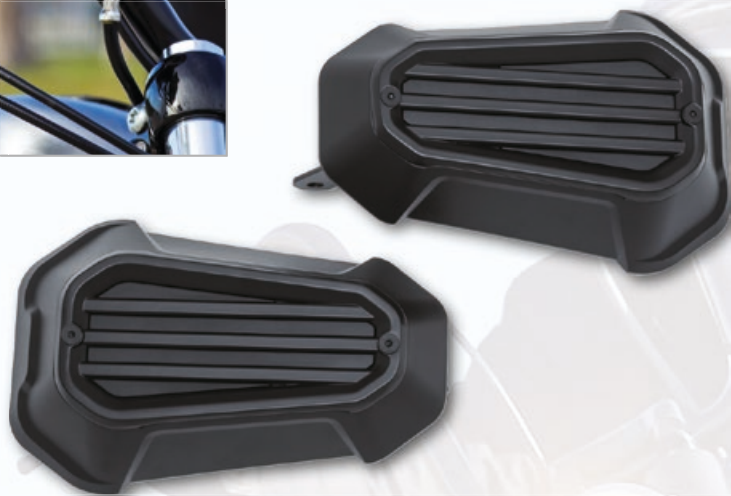
Prove that luggage racks don't have to be run-of-the-mill. The Dillinger Luggage Rack features a unique and aggressive design that's almost too trick to cover up with bags. But, when you do, this fixed-mount rack is capable of handling virtually any sized luggage. Stylized cutouts on the top and sides offer multiple secure points for bungee cords or luggage straps, while a slight rise at the tail helps keep the load from sliding back.

- Includes fixed mounts that install discreetly between the fender and struts for a clean look
- Durable stamped steel construction offered in satin black or silver textured finishes
- Includes all hardware and mounting brackets for easy bolt-on installation
- Styled to match the complete Kuryakyn Dillinger collection
- Recommended max load is 10 pounds

PART#	FITMENT	COLOR	MATERIAL	UNIT
776664	04-20 Sportster, except 16-20 XL1200CX, 04-08 XL1200R, 05-15 XL883R	Silver	Steel/Steel	Each
776665	04-20 Sportster, except 16-20 XL1200CX, 04-08 XL1200R, 05-15 XL883R	Black	Steel/Steel	Each



NEW



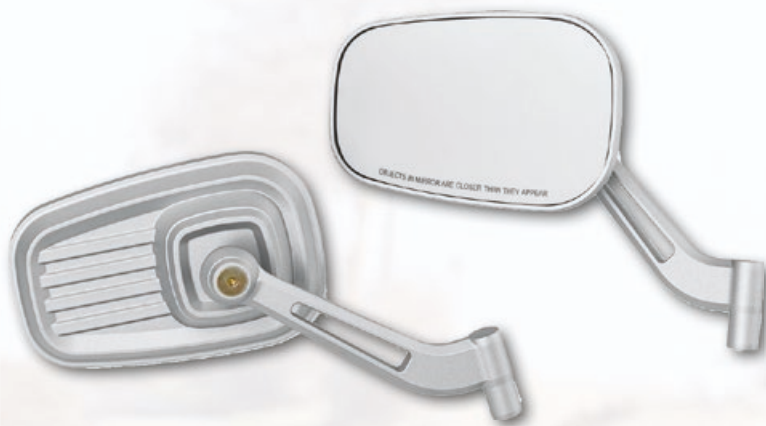
KURYAKYN

Dillinger Hand Guards

Whether riding your Harley hard on the streets and trails, or banging bars on the tracks, Dillinger Handguards add aggressive styling while blocking wind and protecting your hands from rocks and other debris.

- Easy bolt-on design mounts directly to the mirror location reusing existing mirror-stem bolts
- Modular construction from a combination of durable A380 aluminum and ABS, with steel mount
- Blocks wind and protects hands from debris
- Available in silver or satin black finishes

PART#	FITMENT TEXT	COLOR FINISH	MATERIAL	DESIGN	UNIT
776708	04-20 Sportster	Silver	ABS, Aluminium	Dillinger	Pair
776709	04-20 Sportster	Black	ABS, Aluminium	Dillinger	Pair



NEW



KURYAKYN

Dillinger Mirrors

Dillinger Mirrors feature a function-focused design with rugged industrial styling that's built to perform so you can be fully aware of your surroundings. The convex glass mirrors measure approximately 3.5" tall x 5.5" wide with aluminum heads and stems styled to match the complete line of Kuryakyn Dillinger products.

- Durable aluminum construction offered in silver or satin black
- Convex glass mirror heads enhance overall field of vision
- Mirror heads measure approx. 3.5" tall x 5.5" wide
- Machined stainless steel ball and nylon socket for smooth, secure and precise positioning
- Unique industrial styling to match the entire Kuryakyn Dillinger collection

PART#	FITMENT TEXT	COLOR FINISH	MATERIAL	HEIGHT	WIDTH	UNIT
776654	Direct Replacement for Harley Davidson Application (except XG Models); XG Models Require Adapters for Installation	Silver	Aluminium	88,9	139,7	Pair
776655		Black	Aluminium	88,9	139,7	Pair

NEW



KURYAKYN

Dillinger Pegs

If you're looking for another set of dime a dozen, cookie-cutter pegs, you're in the wrong place. Dillinger Footpegs are designed for riders hell-bent on making a statement and pushing their machines to the limit. Features include multi-piece construction with contrasting finishes and a unique pass-through design for an aggressive look and feel.

- Cast from high-quality aluminum with steel splined adapters
- Multi-piece housing blends textured and smooth surface finishes for a killer look
- Raised features on the top surface provide traction
- Dillinger Pegs with male-mount Splined Adapters are direct replacements for most H-D models
- Dillinger Pegs without Splined Adapters require model-specific adapters, sold separately
- Splined adapters allow precise peg angle adjustability to dial in preferred placement

PART#	COLOR FINISH	MATERIAL	DESIGN	DESCRIPTION	UNIT
776666	Silver	Aluminium/Cast	Dillinger	with Male Mount Adapter	Pair

NEW



KURYAKYN

Dillinger Shift Peg

The perfect complement to our Dillinger Pegs features a rugged design so you can aggressively bang through the gears. Features include multi-piece construction with contrasting finishes and a unique pass-through design for an aggressive look and feel.

- Multi-piece construction cast from quality aluminum
- Contrasting finish options offer unique style
- Direct bolt-on replacement for Harley-Davidson shift pegs

PART#	FITMENT TEXT	COLOR FINISH	MATERIAL	UNIT
776714	All H-D Shift Levers (except Sportsters with Mid Controls)	Silver	Aluminium	Each
776715		Black	Aluminium	Each



776672



776673



776679

KURYAKYN

Dillinger Grips

Dillinger Grips combine a narrow profile with ribbed EPDM rubber for excellent grip, commanding control and a soft, vibration-dampening foundation to combat hand and forearm fatigue.

- Assembled with OEM-specific throttle tube

PART#	FITMENT	COLOR FINISH	OPERATION TYPE	BAR Ø	UNIT
776672	82-19 Sportster, 91-17 Dyna, 84-15 Softail, 86-07 Touring, 02-17 V-Rod	Silver	Cable	1"	Pair
776673	82-19 Sportster, 91-17 Dyna, 84-15 Softail, 86-07 Touring, 02-17 V-Rod	Black	Cable	1"	Pair
776674	16-19 Softail, 08-19 Touring, except 18-19 FLTRXSE, 14-19 Trike	Silver	Throttle By Wire	1"	Pair
776675	16-19 Softail, 08-19 Touring, except 18-19 FLTRXSE, 14-19 Trike	Black	Throttle By Wire	1"	Pair

Dillinger Open Ends Grips 7/8"

- Comes without throttle tube
- Bar-mounted end caps for easy installation of bar end mirrors or weights

PART#	FITMENT TEXT	COLOR FINISH	MATERIAL	BAR Ø	UNIT
776678	Universal 7/8" handlebars	Silver	Aluminium, Rubber	7/8"	Pair
776679	Universal 7/8" handlebars	Black	Aluminium, Rubber	7/8"	Pair



KURYAKYN

Dillinger Levers

Dillinger Levers for Harley-Davidson feature an aggressive slotted design combined with an ergonomic feel for riders hell-bent on making a statement and pushing their machines to the limit.

- Cast from durable aluminum offered in silver or satin black
- Multi-piece construction with contrasting finishes delivers unique styling
- Ergonomic design for easy clutch and brake actuation

PART#	FITMENT	COLOR FINISH	UNIT
776668	14-19 Sportster	Silver	Pair
776669	Not Compatible with Riot Grips P/Ns 3580 or 3582	Black	Pair
776681	96-03 Sportster, 96-17 Dyna, except 16-17 FXDLS, 96-14 Softail, 96-07 Touring (Cable operated clutch models only!)	Silver	Pair
776682		Black	Pair



World's Finest Products For Harley-Davidsons

Custom Chrome Europe GmbH
 Carl-von-Ossietzky-Straße 8
 55459 Grolsheim/Germany
 Phone: +49 (0) 6721 - 4 007 - 0
 Fax: +49 (0) 6721 - 4 007 - 100
 e-mail: info@customchrome.de
www.custom-chrome-europe.com



Check Dealer Store!
custom-chrome-europe.com

Managing Director: Thomas Noetzel · Mainz Local Court · Commercial Registry No. 45562 · VAT No. DE811309246