

CC Eagle

**This Eagle flies
„Long Distance“!**

**Stylish mile-eater with eye-catching paintjob:
Custom Chrome Europe's 2018
„Bolt On and Ride“ long distance
Tourer by Harley-Factory Frankfurt.**

CUSTOM CHROME EUROPE
PRESS RELEASE - PUBLICATION FREE OF CHARGE



World's Finest Products For Harley-Davidsons

Custom Chrome Europe GmbH

Carl-von-Ossietzky-Strasse 8
D-55459 Grolsheim
Phone: +49 (0) 6721 - 4 007 - 0
Fax: +49 (0) 6721 - 4 007 - 100
e-mail: info@customchrome.de
www.custom-chrome-europe.com

Milwaukee Eight „Road Glide“ Bagger!



A man wearing a black helmet, sunglasses, and a black t-shirt is riding a black Harley-Davidson motorcycle on a road. He is giving a thumbs up. In the background, a woman with long blonde hair, wearing a black crop top and jeans, is floating in the air, making a peace sign. The background is a soft-focus landscape with green hills and a blue sky.

RIDE UNRIVALLED
CUSTOM CHROME
EUROPE
BOLT ON AND RIDE


CCEagle

CCE TOP BIKE 2018



If you are a Harley-rider and you opt to acquire a FLTRXS Road Glide Special“, you certainly know what you are doing and what you get: One of the most sophisticated and extensively developed Harley-Davidson touring bikes of all times, already equipped with lots of stock accessories and equipment that will make your trip enjoyable. The Road Glide“ models are true mile-eaters – and originally created for America’s Interstates and Highways, thousand kilometres in days are possible on the stock bike too! Which the big Harley-Tourers had to prove several times when in service at Custom Chrome Europe: In ten years of Bolt On and Ride“ history, especially the tourers had acquired several thousands kilometres on European roads. The Harley-Factory in Frankfurt/Main – for years a top address for Harley-Baggers and long-time Custom Chrome Europe partner, especially when it comes to create the challenging Bolt On and Ride“ tourers – lived up to its reputation and created the CCEagle“ as a one-off show stopper. If you look at the current CCE Online-catalogue, there are already many parts for the new Milwaukee Eight tourer – including the flagship of the fleet: The Factory had no reservation of using this source to the fullest extent - and with outstanding result!

The introduction of the new Milwaukee Eight motors in the touring model line of the 2017 model year open not just a new page in Harley-Davidson history: All of the sudden, the complete Harley-Davidson aftermarket was aroused and awake – if not reset to zero“, then at least motivated to prepare for an all-out model change in all Big Twin“ powered model lines, as the shift from Evolution to Twin Cam was still fresh in the memory. It was time to develop new parts or to adapt old and popular styles and components to the new engines and frames that were introduced – and that

would soon be added to other HD models. From all of CCE’s dedicated suppliers and manufacturers, two stand out when it comes to the speed and number of parts available for the new Milwaukee Eight powered touring bikes, both at home in the USA: Arlen Ness and Kuryakyn.



It was the Arlen Ness team that struck first in the night from August 23rd to 24th 2017, immediately after the introduction of the new models! In day and night work, the Ness crew managed to build a complete Ness sty-



le Milwaukee Eight Bagger, checking out which Ness parts would fit and which needed to be remodelled, re-designed or what need to be developed for the new models. This is probably worth an entry into the Guinness Book of Records, it certainly caught the attention of CCE’s Bolt On and Ride“ design team: The front end was massively upgraded with Arlen Ness parts, the 23-Inch front wheel conversion, realized with Ness 7° triple-trees, included. Not just fork boots and Hot Legs“ upgrade the look, internally a Progressive Suspension insert featuring Frequency Sensing Tech-



Custom Chrome Europe Managing Director Andreas Scholz takes the CCEagle“ out for a ride above CCE’s HQ at Grolsheim/Germany.



TOP: Harley-Davidson stock frame and motor, but change of wheel configuration and the size change in front make a difference on Harley-Davidson's top tourer. So do the Kuryakyn frame covers and steering head that add a lot of "bling" to the Road Glide.

nology" improve the riding performance of the heavy weight considerably. Despite Harley's successful efforts for weight reduction – and the lack of a top case on the rear end, the entertainment equipment and electronics hidden in the frame mounted front fairing are adding weight to the front end.



Arlen Ness bags have been a favourite Bagger accessory for decades – and were soon adapted for the new models. Including tail end, latches and release

levers – everything you need for the conversion. The bags are extended to the rear and over the exhausts, plus the kits offer multiple option of single or double exhaust system routing. For a smoother look – and to adapt the bags better to the „flow“ of lines on the body parts – wider side panels by „Dirty Birds Concepts“ are utilized. No adaption issues at the front end, as the ultra-light 23-Inch Ness „Carbon“ fender is a long-established part and mounting routine. The structure fell victim to the superb paintjob of „CCEagle“. Ness



TOP: Arlen Ness stretched bags were available from the start of the M8 introduction of the touring models. Sidefillers are „Dirty Birds Concepts“.

„10 Gauge“ floorboards and foot brake cylinder cover completely the list of Arlen Ness parts used in this project.



Kuryakyn offers an incredible variety of accessories for all Harley-Davidson and Indian models – and many other popular brands too. While CCE is able to distribute all available Kuryakyn manufactured parts, the speed in which adapted and even new parts for the Milwaukee Eight powered models became available did sur-



Low and Go! In "parked" position, the Road Glide demands respect – the seating position is lower than stock.



DETAILS: Kuryakyn Mesh covers grace motor and primary and Thunderbike air filter.

prise. Some design lines feature dozens of often very different components, all of which have to be checked for fitment and possibly re-designed – and produced! Not to mention that Kuryakyn not just adapted current established design lines to the new engine and rolling chassis – they developed new an innovative idea. If you check out the touring frame of the CCEagle“, you may notice the chromed downtubes and steering head, a customizing zone often neglected by the builders. Chromed frame? Despite the incredible effort to

CUSTOM CHROME EUROPE PRESS RELEASE - PUBLICATION FREE OF CHARGE



Yanina takes the handlebar: The Bagger conversion is suitable for most types of riders – if you are ready to control 400+ kg weight.



completely disassemble and stripping the paint from the frame, chroming of frame components has been a no-go area in many countries where customized bikes have to be homologated and modifications legalized in the paperwork. Which inspired Kuryakyn to create fitting covers for downtubes and steering head – and they can gleam as much as they like! As well as many sections on engine and gearbox, where ugly cables, fittings and hydraulic lines wriggle around, waiting to be covered by shiny chrome accessories offered by Kuryakyn. With the introduction of the M8, the front frame triangle has become “undeveloped country”, now the ugly regulators accompanied by equally unwanted oil and water coolers that serve to keep the motor temperature lower than at all preceeding HD engine lines. That’s some good news. But the stock parts are designed, very likely on purpose, to look somewhat – let’s put it mild – “functional”. Opportunity for designers and manufacturers – and Kuryakyn answered the challenge right away.



That the popular “Mesh” design cover line would become a top-seller for the Milwaukee Eight twins had been expected: CCEagle™ has some of them mounted, but only in moderate application. “Mesh” covers upgrade brake calipers, hydraulic cylinders on the handlebar and exchange for some engine/primary covers. Most prominently and visible are the tank dash and the cover to hide the fuel cap. A bigger variety of



CUSTOM CHROME EUROPE PRESS RELEASE - PUBLICATION FREE OF CHARGE



No matter if you target small roads o the highways, Interstate or Autobahn – this bike will get you there!



TOP: Harley-Davidson took great care in developing a state-of-the-art touring motorcycle that is offering comfort and ridability. Harley-Factory converted it into a superb Bagger which is offering eyecatching contrast between chrome and matt paintjob!

Kuryakyn parts is used to hide the less scenic parts of motor, injection and gearbox: Kuryakyn Oil Cooler Cover, Mesh Derby and Timing Covers chrome, Fuel Line Covers chrome, Kuryakyn Transmission Shroud, Transmission Top Cover, Starter Cover, Inner Primary Cover for Milwaukee Eight – we may or may have not forgot one. The 2017 Milwaukee Eight“, the CCEagle“ is powered by the 107 Cubic Inch version, also features a Thunderbike „Grand Classic“ air filter and Falcon’s Double Groove“ 2-in-2 exhaust system – with

the adaption of the mappings to the new components, no further internal changes were done, nor were they necessary. The new Harley Big Twin“ is reliable and powerful – and offers a great value as a daily rider“ without „grilling“ the rider even in stop-and-go traffic.



The most radical interference to the stock Road Glide was the mounting of a RevTech Meridian“ design set of wheels: At the rear end – the wheel hidden from view almost completely anyway by the massive bags



TOP: The Thunderbike „Grand Classic“ air filter in polished version fits the „classic“ look of the big touring bike perfectly!

– the stock 16 Inch diameter was retained, while the front end now holds a 23-Incher instead of the stock 19“. Harley-Factory compensated the added diameter by the already mentioned 7° raked Ness triple trees – and the implementation of an air suspension. In riding“ mode, turning angle of the big tourer is much improved – it really takes guts to fly the Ness floorboards close to the road surface. CCEagle“ immediately became a popular ride with the CCE staff – even alpine pass roads are no problem for this mega-Bag-



The rolling chassis remains pretty much in stock setup, but the stock wheels were exchanged for a complete set of RevTech "Meridian" design wheels.

ger! Fitting Meridian“ brake rotors complete the wheel design – the stock brake calipers, featuring Harley’s own Advanced Braking System“ are perfectly balanced to break the massive touring motorcycle - and are hidden behind Kuryakyn’s Mesh“ covers anyway.



Essential for all customized motorcycles, especially for a heavy weight touring Bagger with attitude“ to hit the road as often and as long as possible, is that the rider feels in control“. With 400+ kilogram weight to be steered and handled, this is no bike for the faint hearted: Fred Kodlin “Flow Bar“ 1 ¼” touring handlebar is high and wide enough to deliver that feeling, no matter if the bike is ridden or pushed. Naturally, the fully equipped Road Glide“ offers numerous control switches to operate all types of audio equipment, navigation and cruise control – so it is a good idea to keep the stock controls for the touring models. They are also quite easy to operate. Grips and levers exchange much easier, so the stock versions were swapped for Arlen Ness “10-Gauge” grips, a Kuryakyn “Trigger” lever set in chromed finish and “Mesh” brake and clutch master cylinder covers.



The rider comes to rest at a stylish Mustang “Touring” one-piece seat of the Fred Kodlin Signature Series“, the lower seating position compensating only a little bit for the much higher riding position, thanks to 23” front wheel and air suspension at the rear end. Depending on the size of the rider, the level of control may feel different – it has to be noted that parking“ and riding“ positions are two different worlds on a motorcycle that exceeds the 400 kg. Looking onto the „cockpit“ for flying the CCEagle over Autobahn or country roads, you cannot miss numerous chromed accents and trims,



all of which can be found in the pages of the Kuryakyn catalogue Bagger section: Tri-Line Speaker Grills for 15-16 Road Glides“, Tri-Line Fuel & Voltage Gauge bezels, Tri-Line Speedo & Tach accent, all chrome, of course. Add Dakota Digital’s hidden“ antenna and the tinted Windvest 9-Inch black“ windscreen – and you have a super contrast to the matt paint job that really catches the eye!



With the CCEagle“ design, brainchild of Harley-Factory’s Wolfgang Huebner, the Harley Factory has again raised the bar for the design of their Bolt On and Ride“ builds: This bike turn heads where ever it is parked or riding. The design combines Harley’s often promoted Eagle Spirit“ with airbrushed eagle heads on both sides of the frame mounted fairing. The classic Speedball“ logo was in use by Harley-Davidson from 1936 to 1939 – and is one of the all-time classics. It was this logo that introduced the new Knucklehead“ OHV-valve configuration, a fitting theme to the sixth generation of Harley-Davidson Big Twin“ engines. René Baumann of RB-Graffix airbrushed the CCEagle“ theme following Wolfgang Huebner’s ideas completely matt, which at first raised concerns how to clean the bike. It turned out that lots of water and a sponge were the best solution, followed by soft tissue fabric to dry and wipe away remaining dirt. There is no doubt that the „CCEagle“ will „fly“ several thousand kilometres over German and European roads in the 2018 season. And then it will look for a new Eagles Nest“...

Text & photos: HRF, Motographer; Full parts catalogue (with alternative parts for other HD model lines!) available as downloadable PDF on the www.Custom-Chrome-Europe.com website!

Model: Yanina (CCE Outdoor & Studio Shooting)



The "Eagle" airbrush design becomes almost alive in the sunshine.



Kuryakyn and Arlen Ness are the two top names that appear on the parts list of the CCEagle – and not without reason. As the detail images approve, these components work together perfectly, despite coming from different manufacturers and different design lines.





STUDIO SHOOTING

The 2018 CCE studio model shoot included this years CCE's top model Yanina. The "Road Glide" is a real eyecatcher!



As usual, a complete studio shooting with all angles, details and this year's CCE model Yanina are available on request. The studio feature does include cover shots and all-important details of the Bagger components that are mounted all over the engine and the bodywork.





CCEagle



Custom Chrome Europe Managing Director Andreas Scholz tests the ground clearance of CCEagle – there's still plenty to go!

Technische Daten/Technical data/Spécifications/Technische Specificaties/Formulario Dati Tecnici/Informação Técnica:

Allgemeines/General/Generalité/Algemeen/Generalita/Geral:

Name/Bezeichnung/Name/Nom de la moto/Naam van de motorfiets/Nome della Moto/Nome da Moto: ... **CCEagle**
 Besitzer/Owner/Propriétaire/Eigenaar/Proprietario/Proprietário: **Custom Chrome Europe**
 Ort/Location/Ville/Stad/Citta/Cidade: **Grolsheim / Germany**
 Auf-/Umgebaut von/Assembly/Refait par/op en ongebouwd door/Costruttore/ Montagem por:.....
 **Harley-Factory, Frankfurt am Main/Germany, www.factorygroup.de**
 Jahr/Year/Année/bouwjaar/Anno/Ano: **2017/18**
 Bauzeit/Time/Terminé/bouwtijd/Periodo di lavorazione/Tempo: **3 months**
 Fertigstellung/Finishing date/Finissage/afbouwdatum/Dati di completare/Data de Acabamento:
 **May 2018**
 Modell/Model/Modèle d'origine/model/Marca e Modello/Modelo de Origem: **Harley-Davidson 2017**
 **FLTRXS Road Glide Special**
 Wert/Value/prix/waarde/valore/Preço: **Will be hitting the road with new owner after the 2018 season**
 Sonstiges/Other/Autres/ovenig/Altro/Outros: **Great long distance ride!**

Motor/Engine/Moteur/Motorblok/Motore/Motor:

Baujahr/Year/Année/bouwjaar/Anno/Ano: **2017**
 Block/Lower end/Bas moteur/onder blok/Blocco Motore/Carter: **Stock HD**
 **Stock HD**
 Kurbelwelle/Crankshaft/Vilebrequin/Ceruleas/Albero motore/Cambota: **Stock HD**
 Zylinder/Cylinder/Cylindrée/cilinderse/Cilindri/Cilindrada: **Stock HD**
 **Kuryakyn Cylinder Base Cover for Milwaukee Eight**
 Kolben/Pistons/Pistons/zuigers/Pistoni/Piston: **Stock HD**
 Hubraum/Displacement/Cylindrée/cilinderinhoud/cilindrata : **107 CuIn (1.753 cc)**
 Pleuel/Con Rod/Bielle/dryfstangen/Biella/Biela: **Stock HD**
 Zylinderköpfe/Heads/haute Cylindrée/cilinderkop/testata/po cilindro: **Stock HD**
 **Stock HD**
 Ventile/Valves/soupapes/kleppen/Valvole/Válvulas: **Stock HD**
 Stößel/Pushrods/Tiges de poussoir/klepstoters/regolabili/Tirante: **Stock HD**
 Nockenwelle/Camshaft/Cames/nokhenas/klepstoters/Veio de excêntricos: **Stock HD**
 Vergaser/Carburator/Carburateur/carburateur/Carburatore/Carburador: **HD Fuel Injection**
 Luftfilter/Air cleaner/Filtre à air/luchtfilter/Filtro Aria/Filtro de Ar: **Thunderbike**
 **„Grand Classic“ polished Powerfilter Kit**
 Zündung/Ignition/Allumage/ontsteking/Accensione/Ignição: **Stock HD**

Krümmer/Pipes/ Pipes d'échappement/uitlaten/scarichi/Escapes: **Stock HD**
 Endtöpfe/Mufflers/Silencieux/demper/silenziatore/Silenciador: **Falcon "Double Groove" SO 2-in-2**
 Leistung (PS)/Horsepower (hp)/Chevaux/vermogen/Cavallo vapore/Cavalos: **Stock HD**
 Sonstige Bemerkungen/Other/Autres/ovenige bijzonderheden/Altro/Outros: **Kuryakyn Oil Cooler**
 **Cover, Mesh Derby and Timing Covers chrome, for Milwaukee Eight, Fuel Line Covers chrome**

Übersetzung/Getriebe/Transmission/Transmission/Versnellungsbak/Cambio/Transmissão:

Baujahr/Year/Année/bouwjaar/Anno/Ano: **2017**
 Typ/Type/Type/type/Typ/Tipo: **Stock FLTRXS Road Glide**
 Gänge/Gears/Vitesse/aantal versnellingen/rapporti/Velocidade: **6-speed**
 Schaltung/Shifting/changement de vitesse/schaledwijze/azionamento/Velocidades: **Foot**
 Primärtrieb/Primary Transmission/Transmission primaire/primaire overbrenging/trasmis. Primaria/
 Transmissão primária: **Stock HD**
 **Kuryakyn Inner Primary Cover for Milwaukee Eight**
 Kupplung/Clutch/Disques d'embrayage/frizione/Disco de Embrayagem: **Stock HD**
 Sekundärtrieb/Secondary transmission/Transmission secondaire/sekundaire overbrenging/trasmis.
 Secundaria/Transmissão Secundária: **Belt, Stock HD**
 Sonstige Bemerkungen/Other/Autres/ovenig/Altro/Outros: **Kuryakyn Transmission Shroud,**
Transmission Top Cover, Starter Cover, Inner Primary Cover for Milwaukee Eight.

Fahrwerk/Frame; Brakes/Cadre; Freins/frame en remmen/Telaio e freni/Quadro e travão :

Rahmen/Frame/Cadre/frame/Telaio/Quadro: **Stock HD FLTRXS Road Glide**
 Baujahr/Year/Année/bouwjaar/Anno/Ano: **2017**
 Lenkkopfeigung/Rake/Chasse/balhoofdshael/inclinazione: **Stock HD**
 Verlängerung (Verkürzung)/Stretch (Shortage)/Allongement (Abréviation)/verlenging (inhoulang)/
 allungamento (riduzione) **---**
 Sonstige Umbauten/Other/Autres/andere wegrigingen/Altro/Outros: **Kuryakyn Lower Frame**
 **Cover 17-up Touring, Deluxe Neck Covers 14-16 Road Glides**
 Schwinge/Swinging arm/Bras oscillant/achtenbrug/Forcellone oscillante/Braço Oscillante: **Stock HD**
 Stoßdämpfer/Shock absorbers/Amortisseurs/schokdempers/ammortizzatori/Amortecedor: **Legend**
 **Air Shocks black**
 Gabel/Fork/Fourche/vork/Forcella anteriore/Garfo: **Modified HD**
 Hersteller/Type/Constructeur/merk/Marca/Constructor: **Harley-Davidson**
 Sonstiges/Other/Autres/ovenig/Altro/Outros: **Arlen Ness "Hot Legs" 10-Gauge Fork Boots and Fork**
 **Cover, Progressive Suspension Cartridge Kit with Frequency Sensing Technology**



CCE top model Yanina at the 2018 CCE outdoor shooting.

Räder/Wheels/Roues/wielen/Ruota/Rodas:

Vorne/Front/avant/voor/antérieure/Frente:

Größe/Size/Dimensions/maat/dimensione/Dimensões: **23 x 3.5" RevTech "Meridian" Design**
 Series Nabe/Hub/Moyeu/naaf/rotore/Rotor: **RevTech RR Hub 2008**
 Speichen/Spokes/rayons/spaken/raggi/Raios: **"Meridian" Design**
 Reifen/Tyre/Pneu/banden/pneumatico/Pneus: **Metzeler, ME 888 Ultra Front Tire**
 **130/60B23M/C 65H Tubeless**

Hinten/Rear/arriere/achter/posteriore/Traseiro:

Größe/Size/Dimensions/maat/dimensione/Dimensões: **16 x 5.0" RevTech "Meridian" Design**
 Series Nabe/Hub/Moyeu/naaf/rotore/Rotor: **RevTech RR Hub 2008**
 Speichen/Spokes/rayons/spaken/raggi/Raios: **"Meridian" Design**
 Reifen/Tyre/Pneu/banden/pneumatico/Pneus: **Metzeler, ME888 Ultra Rear Tire**
 **280/65 B16M/C 81H Tubeless**

Bremsen/Brakes/Freins/remmen/Freni/Travões:

Vorne/Front/avant/voor/antérieure/Frontal:

Bremsscheibe(n)/Disk(s)/Disque(s)/remschiguen/Disco/Disco: **2 x RevTech "Meridian" Rotor**
 Bremszange(n)/Caliper(s)/Bloc(s)/remklaumen/Pinza freno/Bloco: **Stock HD, Kuryakyn Mesh Cover**
 Hinten/Rear/arriere/achter/posteriore/Traseiro:
 Bremsscheibe(n)/Disk(s)/Disque(s)/remschiguen/Disco/Disco: **RevTech "Meridian" Rotor**
 Bremszange(n)/Caliper(s)/Bloc(s)/remklaumen/Pinza freno/Bloco: **Stock HD, Kuryakyn Mesh Cover**
 Sonstige Bemerkungen/Other/Autres/ovenig/Altri/Outros: ---

Accessoires:

Riser: **Stock HD**
 Lenker/Bars/Guidon/stuur/Manubrio/Guiador: **Fred Kodlin "Flow Bar" 1 1/4" Handlebar**
 Spiegel/Mirrors/Rétroviseur/spiegel/Specchietto/Retrovisor: **Stock HD**
 Armaturen/Griffe/Grips/Poignées/handgreepen/manopole/Punhos: **Arlen Ness "10-Gauge" Grips,**
 **Kuryakyn "Mesh" Brake and Clutch Master Cylinder Covers, "Trigger" Lever Set chrome**
 Fußrasten/Pegs/Repose-pieds/voetsteunen/Pedaliera/Pousa Pés:
 Vorne/Front/avant/voor/antérieure/Frontal: **Arlen Ness Driver "10-Gauge" Floorboards, Ness "10-Gauge"**
 **Master Cylinder Cover, Brake Arm & Heel/Toe Shifter and Shifter Rod**
 Hinten/Rear/arriere/achter/posteriore/Traseiro: **Arlen Ness "10-Gauge" Passenger Pegs**
 Tank/Gas Tank/Réservoir d'essence/tank/Serbatoio/Depósito: **Stock Road Glide" tank,**
 **with Kuryakyn "Mesh" Fuel Door & Insert**
 Sitzbank/Seat/Selle/zadel/Sella/Banco: **Mustang "Touring" one-piece seat,**
 **Fred Kodlin Signature Series**
 Öltank/Oil-tank/Réservoir d'huile/olie tank/Serbatoio olio/Depósito de oleo: **Stock HD**

Schutzblech/Fenders/Garde-boue/spatborden/Parafango/Guarda-Lama:

Vorne/Front/avant/voor/antérieure/Frontal: **Arlen Ness Carbon"Front Fender for 23-Inch wheel size**
 Hinten/Rear/arriere/achter/posteriore/Traseiro: **Arlen Ness Fender Kit for 2014-17 Touring**
 Sonstige Bemerkungen/Other/Autres/ovenig/Altri/Outros: **Windvest**
9-Inch Black Windscreen FLTR, Arlen Ness Angled Bag" cases and 10-Gauge" Latch Levers and
Latches, Dirty Birds Concept Side Filler Panels Road King 14-17, Heinz Bikes License Plate Adapter
and LED Signals.

Elektrik/Electrics/Electricité/electrciteit/Elettrico/Electricidade:

Lampe vorne/Headlight/Phares/koplamp/Faro/Faróis: **Stock HD, Road Glide Fairing**
 Rücklicht/Taillight/Feux arrière/achterlicht/Luce posteriore/Faróis traseiros: **Heinz Bikes License Plate**
 **All-Inn 2.0"**
 Blinker/Indicators/Clignotantes/richtingaanwijzers/Lampeggiatore/Piscas: **Front: Kuryakyn**
 **Apollo" Bullet LED Taillight/Indicator, Black Alu Housing, Smoke Lens,**
 **Rear: Heinz Bikes License Plate All-Inn 2.0"**
 Kabelbaum/Wiring/System électrique/kabelboom/Imp. Elettrico/sistema eléctrico: **Stock HD,**
 **modified by Harley-Factory Frankfurt**
 Sonstiges/Other/Autres/ovenig/Altro/Outros: **Kuryakyn Plug Wire Cover chrome "Touring",**
Voltage Regulator Cover 17-up, Tri-Line Speaker Grills 15-16 Road Glides, Tri-Line Fuel & Voltage
Gauge Bezels, chrome, Tri-Line Speedo & Tach Accent, chrome, Dakota Digital hidden" Antenna

Lackierung/Painting/Peinture/spuitwerk/Verniciatura/Pintura:

Idee/Idea/Idée/idee/Idea/Ideia: **Harley-Factory Frankfurt**
 Ausführung/Painter/Peintre/spuiter/Autore/Pintor: **RB Graffix, Rene Bauman**
 Basislack/Base laquer/Laque basique/basiskleur (soort)/Colore base/Côr de base: **Matt Black & Olive**
 Farbe/Colour/Couleur/kleuren/Colore/Côr: **Matt Black & Olive Green**
 Airbrush-Gemälde/Design/Airbrush Art/Design/Peinture speciale/ontwerp/Aerografie/Artista:
 **CCE logo & BOAR Graphics & Eagle**
 Sonstige Bemerkungen/Other/Autres/ovenig/Altri/Outros: **www.rb-grafix.de**

Kontaktadresse/Adress/contact/contactadres/Indirizzo/Morada:

Custom Chrome Europe GmbH
 Carl-von-Ossietzky-Straße 8
 D-55459 Grolsheim
 Phone: +49 (0) 6721 - 4 007 - 0
 Fax: +49 (0) 6721 - 4 007 - 100
 e-mail: info@customchrome.de
 Websites: www.Custom-Chrome-Europe.com



BON(N) Voyage!

*There is a whole lot of History
between Grolsheim and Bonn!*



**ALTERNATIVE SHOOTING:
THURANT CASTLE OUTDOOR SHOOT &
BOLT ON AND RIDE CCE STAFF TOUR 2018!**



CUSTOM CHROME EUROPE 2018: Bolt On and Ride“ Staff Tour Bon(n) Voyage“

Almost every year, CCE's Bolt On and Ride“ bikes are ridden and photographed in the scenic landscapes all over Europe. When a planned summer-time trip from Grolsheim to Bonn was sheduled in August 2018, Motographer“ Horst Roesler plotted a route through 11.000 years of German history – and even the participants of the trip, travelling the less than 190 km distance along narrow side roads of the Rhine river, the Mosel river, the Maifeld from Hatzenport to Maria Laach and the Brohl valley on their own or the present BOAR bikes don't know yet what historic paths they have travelled or crossed!

The CCEagle“ was the scout-bike for checking the road condition and fuel stops – and was subsequently also shot again near Castle Thurant, just above the Mosel river valley. Bon(n) Voyage“ will also be available of an outstanding touring story which delivers some of the best touring routes and destinations between Mainz and Bonn!



CUSTOM CHROME EUROPE PRESS RELEASE - PUBLICATION FREE OF CHARGE



Stop at the Loreley rock: The 2018 CCE Staff tour to Bonn passed some of the most scenic locations of Rhine valley and Eifel mountains.





WWW.MOTOGRAPHER.DE

CUSTOM CHROME EUROPE PRESS RELEASE BIKE FEATURE



Dipl.-Ing. Horst Rösler

Werrastraße 26
60486 Frankfurt/Main - Germany

Tel./Fax ++49 - (0)69 - 77 22 87
Mobile ++49 - (0)172 - 69 56 338

e-mail: Motographer@GMX.de
www.motographer.de

Custom Chrome Europe's 2018 Top Cover Custombikes...

"Bolt On and Ride" again rides into the 2018 season! As in previous years, Custom Chrome Europe has commissioned a complete new line-up of "BOLT ON AND RIDE" motorcycles that range from Sportster to the most current Milwaukee Eight" Harley-Davidson model lines. Studio, outdoor and riding images are made and continuously updated during the season!

This "Bolt On and Ride" Road Glide Bagger has been created by Harley-Factory Frankfurt, continuing the line of trendsetting rideable Touring motorcycles by Custom Chrome Europe. Having already built several big touring bikes for CCE, all of which were extensively used for "Bolt

On and Ride" tours, Wolfgang Huebner of the Factory's "customizing department team has worked from CCE's extensive parts list, on this spectacular longer than on any other 2018 BOAR bike. The bike premiered at LAKESIDE BIKE DAYS 2018 in Mainhausen/Germany in May. As during the last decade, the 2018 "BOLT ON AND RIDE" motorcycles are not only ridden by CCE staff but also by you, the press – check in with Custom Chrome Europe Marketing with your own "testride" feature of the 2018 "Bolt On and Ride" motorcycles – or meet the members of the CCE Staff "on the road" when the bikes are ridden unrivalled" to events all over Europe! See you on the road!

TEXTE OPTIONAL IN DEUTSCH

TEXTS OPTIONAL IN ENGLISH



Model_277.jpg



Model_291.jpg



Model_309.jpg

NOTE:

Images are sorted by folders to allow you fast access to a) images in this layout or b) a pre-selection from all images available.

COVER OPTIONS



Model_317.jpg



Model_401.jpg



Model_423.jpg

NOTE:

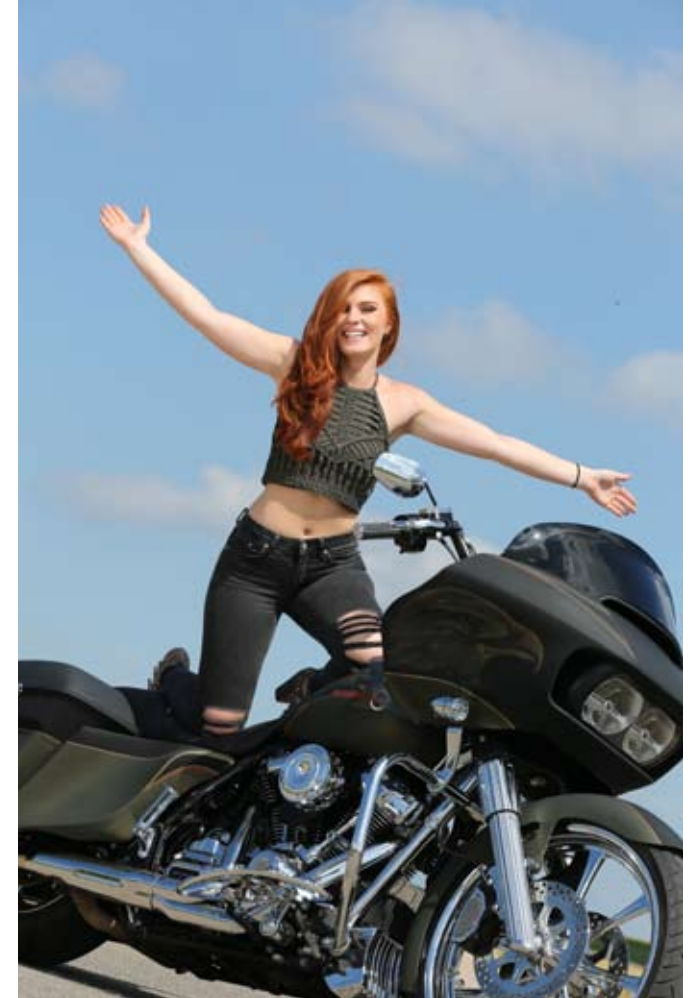
Images are sorted by folders to allow you fast access to a) images in this layout or b) a pre-selection from all images available.



Model_337.jpg



Model_155.jpg



Model_153.jpg

NOTE:

Images are sorted by folders to allow you fast access to a) images in this layout or b) a pre-selection from all images available.

COVER OPTIONS



ART_Andreas_RIDE_UP+MOD_0131_B.jpg



ART_Andreas_RIDE_UP_0131.jpg



RIDE_0102.jpg

NOTE:

Images are sorted by folders to allow you fast access to a) images in this layout or b) a pre-selection from all images available.



ART_MOD_BIKE_RIGHTfront+MOD_UP_IMG_3129.jpg



MOD_BIKE_RIGHTfront+MOD_UP_C64P7275.jpg



MOD_BIKE_RIGHTrear+MOD_UP_C64P7254.jpg

NOTE:

Images are sorted by folders to allow you fast access to a) images in this layout or b) a pre-selection from all images available.